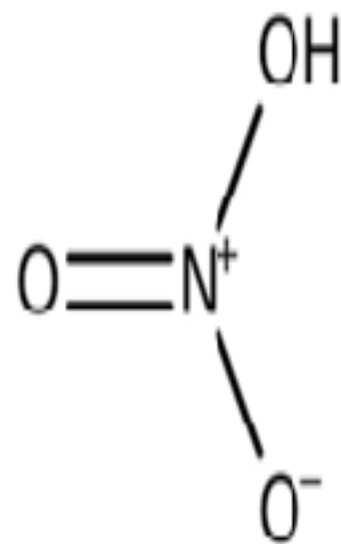


# Nitric Acid

By Dr S R Bharath Kumar  
Under Guidance of  
Dr Ashok Kumar Dantkale  
Prof. Dept Of Materia Medica  
Government Homoeopathic Medical College  
Bengaluru

[homeobook.com](http://homeobook.com)



homeobook.com



# Introduction

- The pure compound is colorless, but older samples tend to acquire a yellow cast due to decomposition into oxides of nitrogen and water. Most commercially available nitric acid has a concentration of 68% in water. When the solution contains more than 86%  $\text{HNO}_3$ , it is referred to as *fuming nitric acid*.

## ○ Uses

- The main industrial use of nitric acid is for the production of **fertilizers**. Nitric acid is neutralized with ammonia to give ammonium nitrate.
- The other main applications are for the production of **explosives, nylon precursors, and specialty organic compounds**.

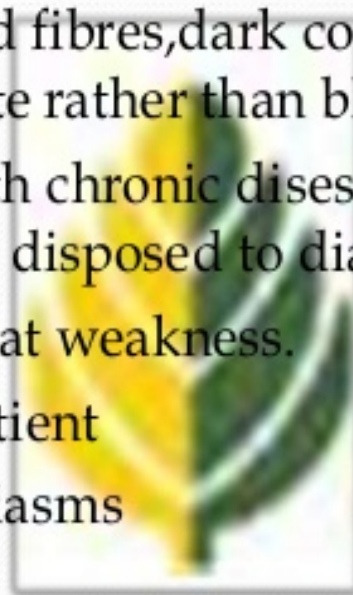
- Nitric acid is a highly corrosive, strongly oxidizing acid. Nitric acid may exist in the air as a gas, vapor, mist, fume, or aerosol.
- Nitric acid mist will probably be scrubbed in the mouth or nasal passages, gas and vapor in the upper respiratory tract, and fume and aerosol in the alveolar region of the lungs.
- Toxicity after inhalation exposure to nitric acid is similar in humans and animals. Nitric acid fumes may cause immediate irritation of the respiratory tract, pain, and dyspnea, followed by a period of recovery that may last several weeks.
- A relapse may occur resulting in death caused by bronchopneumonia and pulmonary fibrosis. At nonlethal concentrations, allergic or asthmatic individuals appear to be sensitive to acidic atmospheres



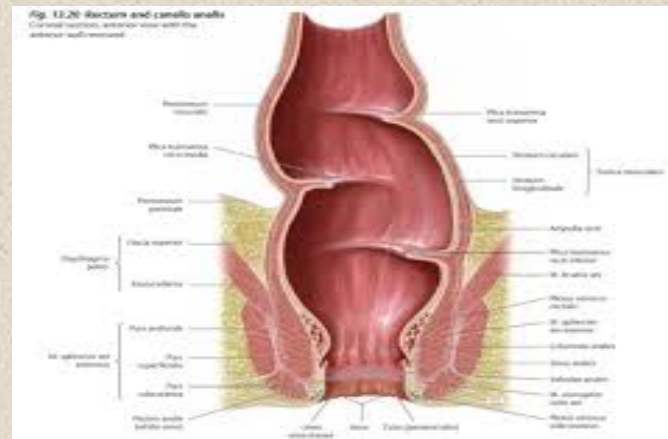
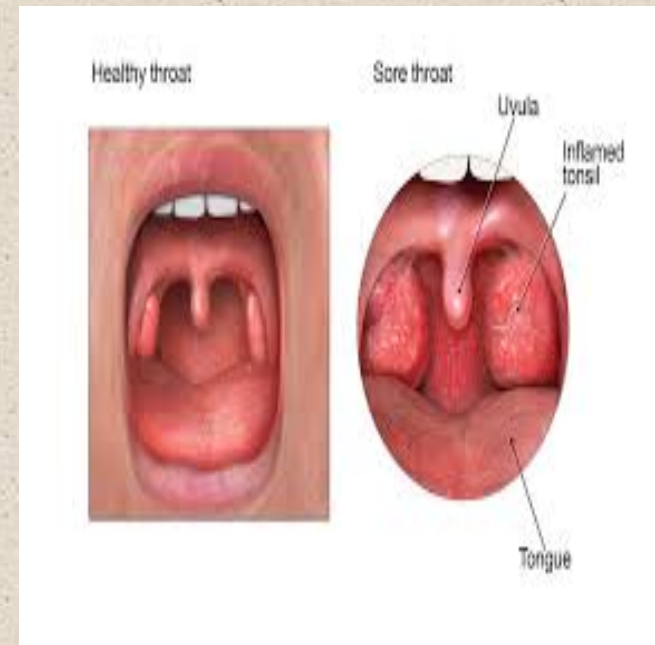
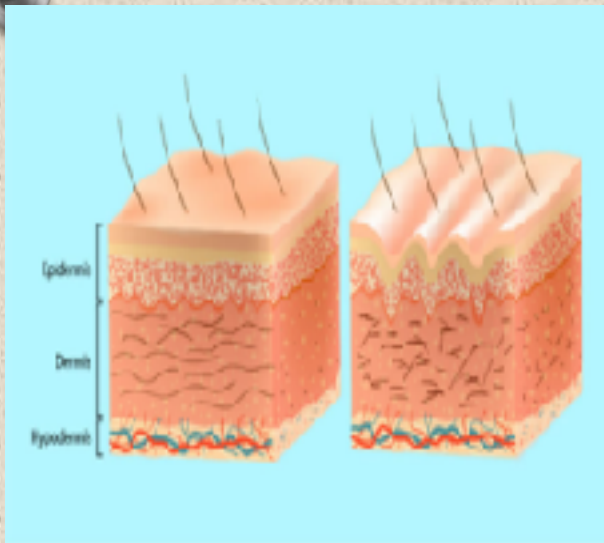
- o Common Name: Aqua fortis, Spirit of Nitre
- o Chemical Formula :  $\text{HNO}_3$
- o Kingdom : Minerals
- o Prover: Hahnemann
- o Duration Of Action : 40-60 Days

# Constitution

- Sycotic remedy
- Thin persons of rigid fibres, dark complexion, black hair and eyes, the brunette rather than blonde.
- Person suffering with chronic disease who take cold easily and are easily disposed to diarrhea.
- Old people with great weakness.
- **Thermal:-** Chilly patient
- **Miasm:-** all three miasms







# Sphere of action

- It has a marked affinity for the margins of the outlet especially of the throat, anus and mouth.
- In addition, it affects glands, liver, prostate and salivary.





# Pathology



**Sluggishness-  
Circulation  
is the first stage of  
pathology**

### **Fissures**

found at the junction of skin and mucous membrane

Dryness





# Offensive

Perspirations, acrid, corrosive,



# Pathogenesis

- **Mucous Membrane** – Inflammation, Destruction , Haemorrhage,Ulceration
- **Glandular System-** Congestion, Inflammation, Foetid discharges
- **Skin** – Pustular ulceration, Fungoid growths, Perspiration
- **Blood-** Broken down , Septic condition



A/F




# Mind





# Rajan Sankaran

- Remedy Of cancer miasm
- Sympathetic , cares for others, conditional(Phos, Caust)
- Theme- Constant feeling of threat



Health

Work

Relationship

- Delusions- criminals about, figures sees
- Hard unforgiving towards enemy, but sympathetic towards his supporters

# Kent

- Feeble Reaction , Extreme Sensitivity, and Nervous Trembling.
- Broken down subjects who are disposed to suffer from frequent attacks of diarrhoea, constipation.
- He is pale , losing flesh, strength, and subjected to excoriation of orifices.



# Vithoulkas



- o **Dissatisfaction** – “Pests”
- o Always dissatisfied and miserable , never pleased even under joyful circumstances.
- o They consider themselves unfit for company.
- o **Unforgiveness** – cannot forgive wrong done to him .
- o **Irritable** - < **Morning**
- o Cant tolerate people wishing him good Morning

- o **Anxiety Neurosis-** internal sensitivity,
- o Everything bothers him, noise ,
- o even little disturbances
- o **Insane Anxiety-** women finds a pimple on scalp would be cancer of brain- Anxiety about her health
- o **Barrier –** Between them and others , preventing communication
- o they stay in their own world of suspicion
- o **Excitabilty in Sex –** Visits prostitutes as he requires only physical satisfaction , rather than emotional contact.
- o **Suicidal Thoughts –** Feels too weak to Cope with circumstances , fear of death , afraid to kill himself yet he walks around with a Pistol







# Mentals

- o Irritable, Hateful
- o Vindictive
- o Headstrong
- o Hopeless , Despair
- o Sensitive to noise , pain, touch, jar
- o Fear of death



# Guiding Symptoms

- o Excessive weakness of mind and body , Least exertion tires him.
- o Great depression, despair, sadness
- o Morbid fear of cholera
- o Extreme fetid and corrosiveness of all discharges.
- o Tendency towards condylomatous growths, warts, bleed on slightest touch.
- o Sticking, pricking, pains as if from splinters in the affected parts.





- Flat, suppurating ulcerations, irregular shapes and zig zag edges .
- Albuminuria, urine scanty, dark brown, and smelling like horse's urine.
- Acrid offensive, greenish yellow leucorrhea, too early, dark muddy coloured menses.
- Constipation, Stools hard and small like sheep dung, with hemorrhoids anal fissures





# Head

- o Sensation of band around head (apis, caust, Carb veg, Sulp)
- o Headache from pressure of hats,
- o < from noises,
- o Hairfall out from vertex, scalp sensitive



# Eyes

- Sensation Warm water flowing over eyes,  
> Cold water
- Diplopia, eyelashes stiff all points towards  
nose(right)
- Fistula Lachrymalis , (Calc , Flc acid
- Petr, Puls ,Silicea)





# Ears

- Deafness > Noise, Riding in carriage
- Cracking in ears when chewing
- Ones's speech echoes in ears
- Caries of mastoid (**Aur, Caps, Sil, Fl Acid**) with cystic tumors on lobes



## Nose

- Bleeding , Ozena ,Fetid yellow discharge (**Aur m, Asaf, Calc, Hepar, Kali bi, Merc, Puls, Sil**)



# Face & Mouth

- o Yellow , sick look
- o Angles of lip raw, cracked
- o Gums swollen, bleeding
- o Tongue , clean ,red with centre furrow(glossitis)
- o Salivation bloody, Fetor oris
- o Caries of teeth.
- o Teeth as if soft and spongy(scorbut





# Throat

- Ulcers with shooting pain in mouth and throat.
- Burning and soreness esp on swallowing liquids (Lach, lyss, Stram, Merc, Ign, iod)
- Tonsils red and swollen, with great dryness and heat in throat.



# Stomach

- Nausea after a meal with heaviness of head. **(Nux v, Kali carb, mag mur)**
- Pyrosis , water brash quickly after drinking.
- Longing for fats, salts, indigestible things(chalk, Earth)
- Dislikes meat, sweets, bread.





# Abdomen & Rectum

- o Jaundice
- o Stools tear the rectum, even though soft
- o Fissures in rectum, prolonged pain after stools.
- o Easily bleeding hemorrhoids with burning
- o Ulcerations after dysentery.
- o Haemorrhage from rectum after haemorrhoids removal.



# Urinary

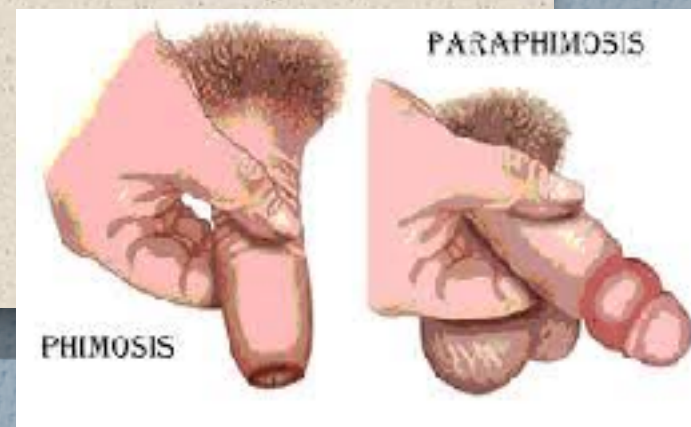
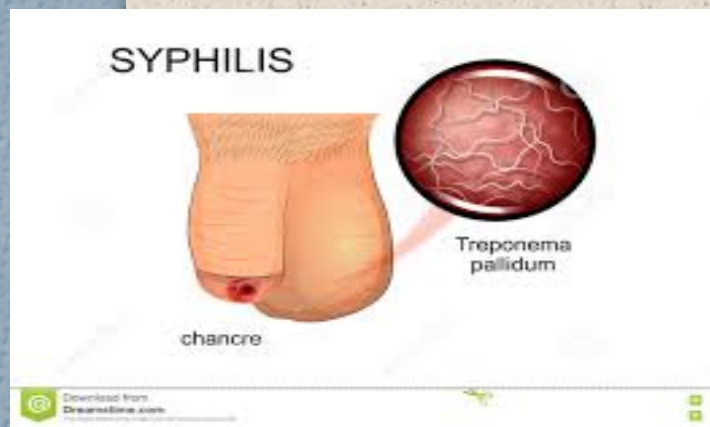
- Strong as horse urine, offensive , cold when it passes.
- Alternately profuse and scanty
- Haematuria with shddering along the spine.
- As of hot wire in Urethra
- Urine contains oxalic acid, uric acid , phosphates.
- Red Scurfy sopts on perpuce or on cona glandis.
- Painless retention or incontinence of urine.





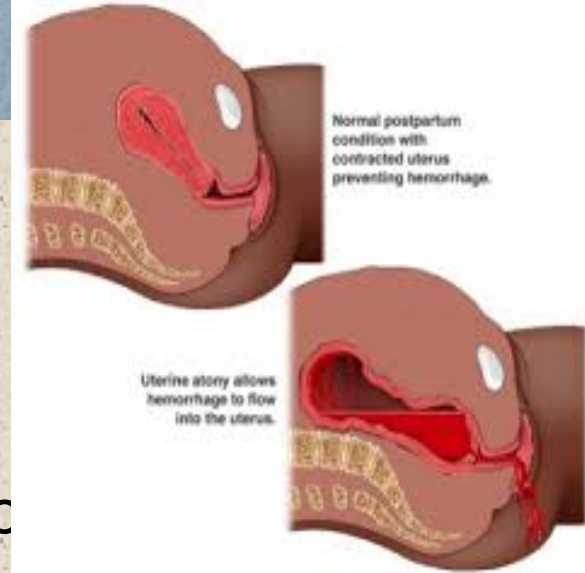
# Male

- Itching, burning of foreskin.
- Chancres, Phagedenic.
- Oeematous perpuce.
- Phimosis & Paraphimosis ( **Hep, Merc , Lach, Sulp** )
- Styriictures from gonorrhoea or syphilis.



# Female

- Voluptuous itching of vagina after coitus
- Bloody discharge or hemorrhage after overexertion.
- Mense, irregular like muddy water.
- Metrorrhagia after parturition, after curetting.
- Leucorrhoea, brown, yellow stringy or leave spots with black border.





# Respiratory

- Cough shattering from dry spot in larynx,
- Expectoration mucopurulent, yellow, offensive, accompanied with sweat.
- Haemoptysis, Pthisis.
- Short breath from uterine displacements.



# Extremities

- Finger joints swollen
- Sweating o palms and hands with coldness of parts.
- Fetid foot sweat causing soreness of toes.
- Ingrowing of nails with ulceration and feeling of splinter agg. Touch.
- Warts on back of hands





# Skin

- Dry, eroded , cracked in every angle.
- Skin itching on undressing.
- Crusts form and fall off.
- Ulcers rapid, raw, ragged with proud flesh or plugs of flesh, splinter .
- Bleeds on touch or washing.
- Stubborn suppuration.
- Condylomata



# Sleep & Fever

- Shocks on going to sleep
- Anxious unrefreshing sleep with frightful dreams.

## ◦ **Fever**

- Icy coldness of soles,
- Sweats easily then takes cold
- Exhausting profuse sweats, in morning ( In spinal injuries)
- Night sweats on part loin on.



# Modalities

- o < Slight touch, jar, noise,
- o Fat food, Damp, evening, heat of bed
- o Mercury, mental exertion , Loss of sleep
  
- o > Gliding motion
- o Riding in a carriage
- o Steady pressure

# Relationship

- Complementary: Ars, Calad, Lac can, Sep
- Inimical: Lach
- Compare: Merc , Kali, Thuja, Hepar, Calc



# Clinical Indications

- Anxiety of health
- Ulcers
- Fissures ( Skin, Rectum)
- Haemorrhages
- Warts
- Insomnia
- Glossitis





## ◦ **Merc sol**

- Hurried, restless sweaty.
- Filthy mind and body.
- Albuminuria with bloody black urine.
- Ulcers – male genitals, chancres with itching.
- Tendency to perspiration but patient not relieved.
- Skin excoriations, , crusty eruptions, moist eczema

## ◦ **Ars alb**

- Great Anguish, Restlessness
- Fear of death, of being left alone
- Burning , ulcers with offensive discharge, gangrene.
- Cadaverous odour

## ◦ **Muriatic acid**

- Ulcers , burning tearing pains with violent hemorrhages
- Muscular exhaustion.
- Septic conditions with low grade fevers
- Patient suffers from silence

## ◦ **Arum triph**

- Discharges are acrid causing painful, soreness, rawness and burning of parts .
- Persistently boring into nose.



## ◊ **Hepar Sulph**

- ◊ Oversensitive to all impressions
- ◊ Tendency to suppuration
- ◊ Mucous membrane produce profuse secretions, foul like old cheese,
- ◊ Sweats profusely, but dares not to uncover.
- ◊ Urine passed slowly, passing blood or pus after urination

## ◊ **Calcarea**

- ◊ Affections of skin, bones and glands.
- ◊ Sweating easily, discharges are profuse , often sour
- ◊ Fears Disease, misery, disaster, of being observed.

◊ **Benzoic acid**

- ◊ Uric acid diathesis
- ◊ Urination profuse, and scanty alternating.
- ◊ Urine Hot Dark brown, Strong odour of ammoniacal or Horse urine.
- ◊ Enuresis

◊ **Viola tricolor**

- ◊ Urine offensive
- ◊ Smelling like cats urine.



## Lachesis

- Hemorrhages thin dark particles like charred straw,
- Discharges are acrid , offensive.
- Sensation of lump in throat

## Kali bi

- Mucous membrane secretions are stringy, sticky, tough and lumpy.
- Greenish ropy discharges
- Ulcers are dark , with overhanging edges or crusts.
- Ozena, Nasal Polypi

# Rubrics

- o Delusions, criminals about
- o Delusion, die, he was about to
- o Delusion sick being
- o Anxiety health about
- o Malicious
- o Misanthrophy
- o Sympathy, compassion



# Kent

- Warts on Face
- Tongue cracked in all directions
- Ulcers, mouth on edges of tongue
- Urine , sediment, oxalate of lime
- Desires fat food
- Fissure in ano
- Worse when halfsleep

# Refernces

- o Soul of remedies- Sankaran
- o Essence of Materia Medica- Vithoulkas
- o Clinical Materia Medica- Farrington
- o Kent's Materia Medica
- o Phatak's Materia Medica
- o Physiological Materia Medica- W H Burt



*Thank  
you*

